

# MOUNT BARKER

## DISPLAY CENTRE

# OUR DIFFERENCE

### OUTSTANDING VALUE FOR MONEY

CORAL HOMES IS ONE OF THE LARGEST HOME BUILDERS IN AUSTRALIA BECAUSE WE CONSISTENTLY PROVIDE HIGH QUALITY NEW HOMES AT AFFORDABLE PRICES.

### OPEN PRICING POLICY

WE GO FURTHER THAN GIVING YOU A PRICE LIST; WE EMPOWER YOU TO MAKE A MORE INFORMED DECISION WITH OUR UNIQUELY TRANSPARENT APPROACH TO PRICING.

### DESIGN FLEXIBILITY

WE GIVE YOU THE POWER TO CUSTOMISE YOUR HOME TO SUIT YOU AND YOUR FAMILY'S NEEDS.

### YOUR LOCAL BUILDER

ALL OF OUR HOMES OFFER EXCEPTIONAL VALUE FOR MONEY WITH QUALITY FROM THE FOUNDATIONS UP, AND PERSONALISED SERVICE TO MATCH.

**CORAL HOMES**  
coralhomes.com.au



©Coral Homes Pty Ltd. The copyright in the floor plans and facades depicted in this brochure are owned by or licensed to Coral Homes Pty Ltd and may not be reproduced, copied or dealt with in any manner which infringes the exclusive rights of Coral Homes Pty Ltd as prescribed by the Copyright Act 1968 without the express written authorisation of Coral Homes Pty Ltd. QBCC 50792/1014053 NSW OFT 62084C & SA BLD260339. Gill Constructions Pty Ltd is a Franchisee of Coral Homes Franchising Pty Ltd. Photography may depict fixtures, finishes and features such as kitchen upgrades, furniture and floor coverings which are not included in the price of the homes on display or which are not supplied by Coral Homes such as homewares, furniture, BBQ setting and window treatments.

**MOUNT BARKER DISPLAY CENTRE**  
132 HEYSEN BOULEVARD  
MOUNT BARKER, SA

**CORAL HOMES**

14.5M<sup>+</sup> LOT WIDTH

## SANTORINI 26

### STANDARD PLAN



### BEDROOMS

Master:	3800 x 4000
Bed 2:	3000 x 3200
Bed 3:	3000 x 3000
Bed 4:	3000 x 3420

### LIVING AREAS

Family:	4600 x 4500
Media:	4400 x 4000

### OUTDOOR

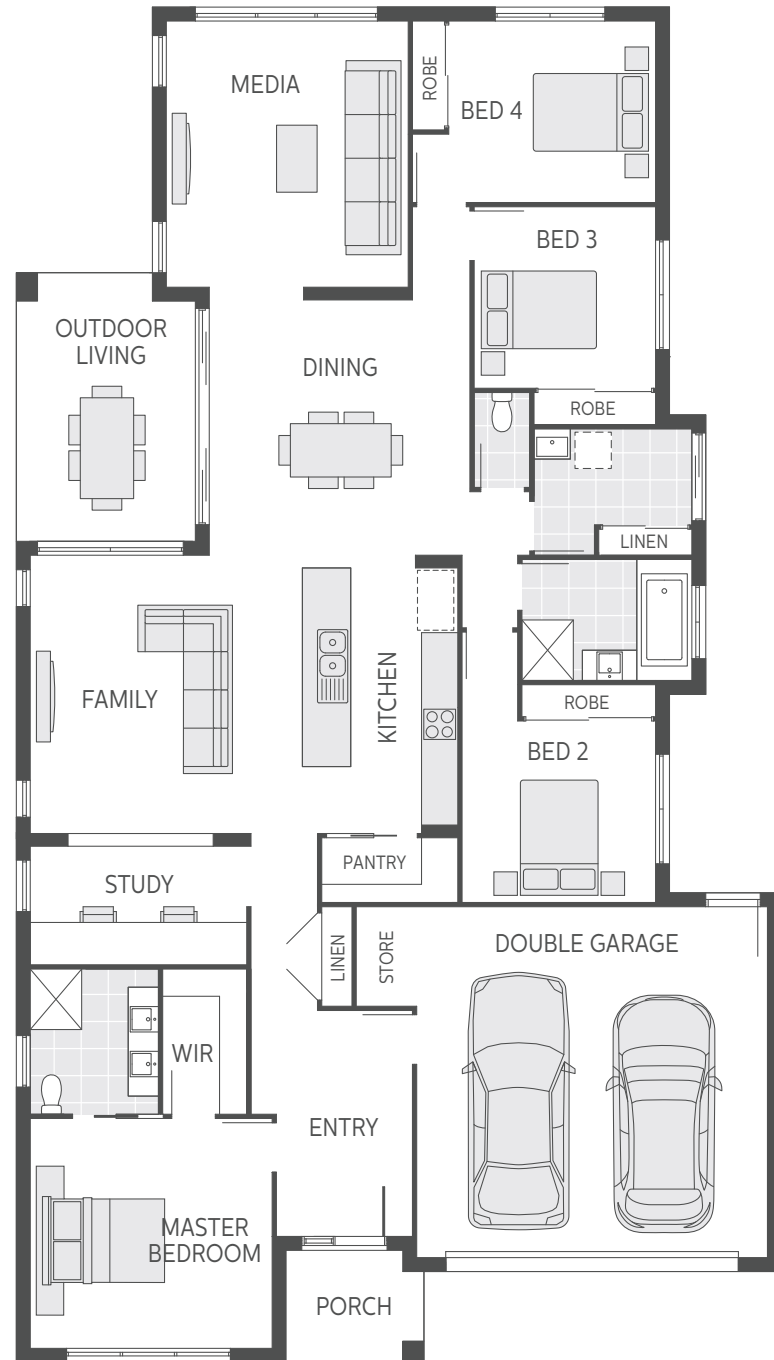
Outdoor Living:	4440 x 2960
-----------------	-------------

### FLOOR AREA

Total:	240.31m <sup>2</sup> (25.9sq)
--------	-------------------------------

### EXTERIOR DIMENSIONS

Length:	22400
Width:	12650



## SANTORINI 26

### AS DISPLAYED PLAN

#### Plan options shown

- Master suite display option
- Increased double garage storage
- Feature TV recess with built in gas fire
- Global Chef kitchen upgrade including drop ceiling
- Extended outdoor living with feature timber posts

NOTE: Further plan modifications and inclusion upgrades apply to this display home. Plan shown is as-displayed and is therefore not representative of what is included in the base house price for this home design. Refer to a new home consultant for more information.

