

36 Parkland Avenue, Mount Barker

VICTORIAN TERRACE



KEY FEATURES

- Full turn key offering - nothing more to do
- Waterfront Terrace
- Victorian Row Terrace inspired facades
- Large, private backyard
- Ducted reverse cycle air conditioning
- Window coverings to living area and bedrooms
- Floor coverings throughout
- Torrens titled

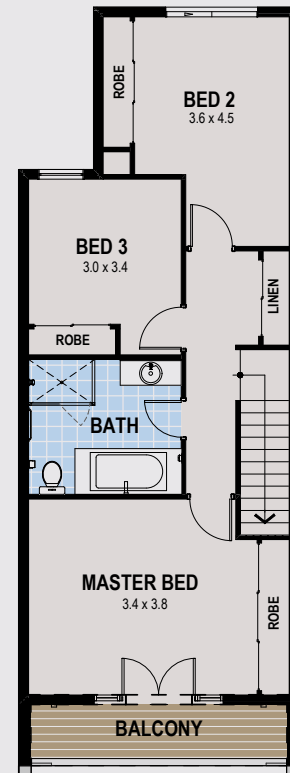
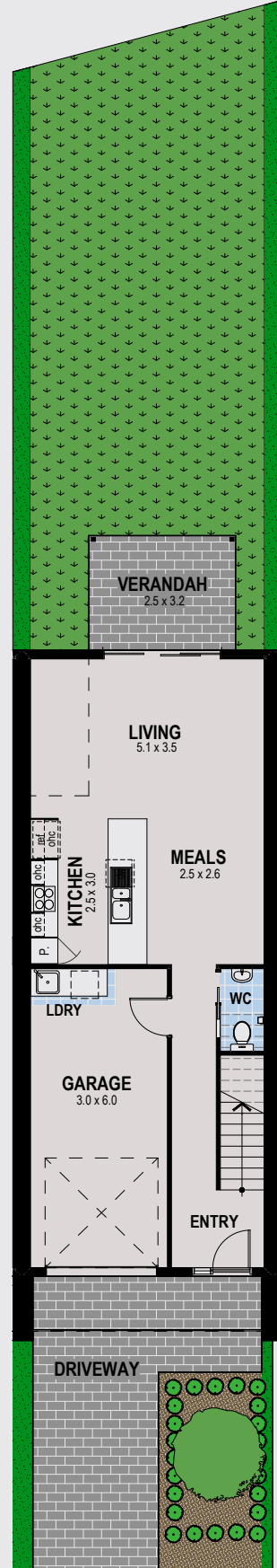
DIMENSIONS

House

Ground	75.28m ²	<i>Including Garage</i>
Verandah	8.00m ²	
Upper	70.53m ²	
Balcony	6.58m ²	
Total Area	160.39m²	

Land

Width	5.5m
Depth	32.8m
Total Area	185m²



UPPER FLOOR